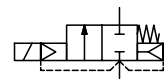




# SOLENOID VALVES

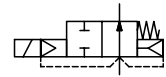
pilot operated  
built-in pilot, floating diaphragm  
3/8 to 2

NC



2/2  
Series  
238

NO



## FEATURES

- Minimum operating pressure differential  $\Delta P$  0,3/0,5 bar
- Two way valves for automatic control of water, air and inert gas and other gases/liquids compatible with the sealing materials used
- Interchangeability of magnetic heads, AC and DC
- The solenoid valves satisfy all relevant EC Directives

## GENERAL

Differential pressure	See «SPECIFICATIONS» [1 bar = 100 kPa]						
Ambient temperature range	-10°C to +60°C						
Maximum viscosity	40 cSt (mm <sup>2</sup> /s)						
Response time	3/8	1/2	3/4	1	1 1/4	1 1/2	2
opening time (ms)	25	30	55	70	300	300	1500
closing time (ms)	40	90	110	200	1000	1000	2000

fluids (*)	temperature range (TS)	seal materials (*)
DN ≤ 25: air, inert gas and water	-10°C to +85°C	NBR (nitrile)
DN > 25: air and water		FPM (fluoroelastomer)

## MATERIALS IN CONTACT WITH FLUID

(\*) Ensure that the compatibility of the fluids in contact with the materials is verified

Body	Brass
Internal parts	Stainless steel and brass
Springs	Stainless steel
Diaphragm & valve disc	NBR
Seals and pilot disc	FPM (3/8 to 1), NBR (1 1/4 to 2)
Shading coil	Copper

## ELECTRICAL CHARACTERISTICS

Coil insulation class	F
Connector	Spade plug (cable Ø 6-8 mm or Ø 6-10 mm)
Connector specification	DIN 43650, 11 mm, industry standard B
for power coil: 4 W/6,9 W	ISO 4400 / EN 175301-803, form A
for power coil: 5W/6,9W-8W/9W	IEC 335
Electrical safety	Moulded IP65 (EN 60529)
Electrical enclosure protection	DC (=) : 24V - 48V
Standard voltages	AC (~) : 24V - 48V - 115V - 230V / 50 Hz
(Other voltages and 60 Hz on request)	

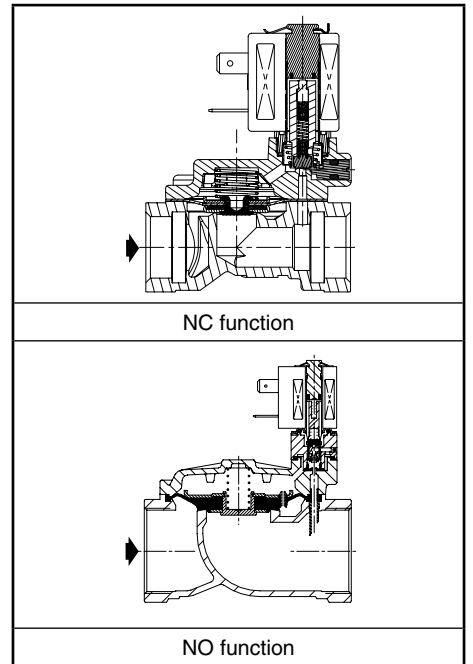
prefix option	power ratings				operator ambient temperature range (TS) (C°)	replacement coil		type <sup>(1)</sup>
	inrush ~	holding ~	hot/cold =			~	=	
	(VA)	(VA)	(W)	(W)				
SC	12	6	4	5/6,9	-10 to +60	230 V/50 Hz	24 V DC	01 <sup>(2)</sup>
	10,4	6	5	5/6,9	-10 to +60	400727-117	400727-185	02
	23	14	8	7,5/9	-10 to +50	43005275	43005272	03

<sup>(1)</sup> Refer to the dimensional drawings on the following page.

<sup>(2)</sup> UL/CSA certified.



C



## SPECIFICATIONS

pipe size	orifice size	flow coefficient Kv		operating pressure differential (bar)				power coil (W)		catalogue number	options				
				min.	max. (PS)		~				=	maintained	man. operator	FPM	EPDM
					air / water (*)										
<b>NC - Normally closed</b>															
G* 3/8	12	2,4	40	0,3	10	10	4	6,9	SCE238D001	MO	V	E			
					16	16	5	6,9					SCE238D006		
G* 1/2	12	2,4	40	0,3	10	10	4	6,9	SCE238D002	MO	V	E			
					16	16	5	6,9	SCE238D007						
	15	4,2	70	0,3	10	10	4	6,9	SCE238D003	MO	V	E			
					16	16	5	6,9	SCE238D008						
G* 3/4	20	6,6	110	0,3	10	10	4	6,9	SCE238D004	MO	V	E			
					16	16	5	6,9	SCE238D009						
G* 1	25	9,9	165	0,3	10	10	4	6,9	SCE238D005	MO	V	E			
					16	16	5	6,9	SCE238D010						
G 1 1/4	30	15	250	0,5	10	10	8	9	SCG238C016	MO	V	-			
G 1 1/2	45	27	450	0,5	10	10	8	9	SCG238C017	MO	V	-			
G 2	45	34	566	0,5	10	10	8	9	SCG238C018	MO	V	-			
<b>NO - Normally open</b>															
G 1 1/4	30	15	250	0,5	10	10	8	9	SCG238C019	-	V	-			
G 1 1/2	45	27	450	0,5	10	10	8	9	SCG238C020	-	V	-			
G 2	45	34	566	0,5	10	10	8	9	SCG238C021	-	V	-			